

# C01c

## LOW PROFILE SHROUDED HEADER STRAIGHT

PITCH: 2.54mm

### SPECIFICATIONS

#### Material

Insulator : PBT, glass reinforced, rated UL 94V-0

Contact : Phosphor Bronze or Brass

#### Electrical

Current Rating : 2 Amp

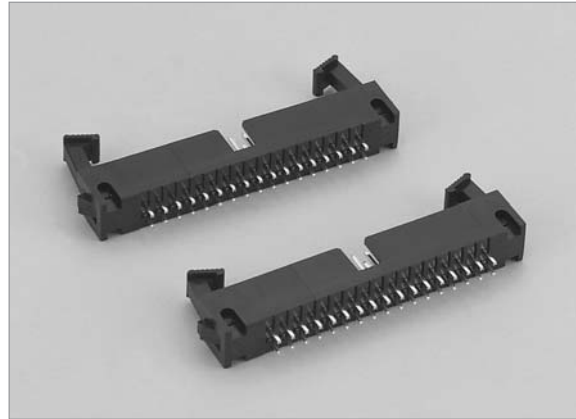
Contact Resistance : 30 mΩ max.

Insulation Resistance : 3000 MΩ min.

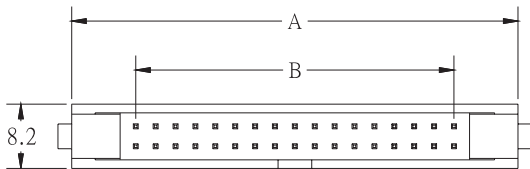
Dielectric Withstanding Voltage : 500V AC for 1minute

Operating Temperature : -40°C to +105°C

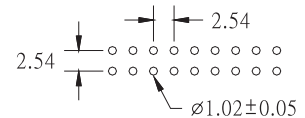
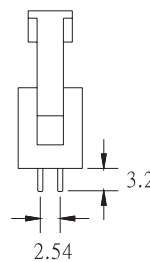
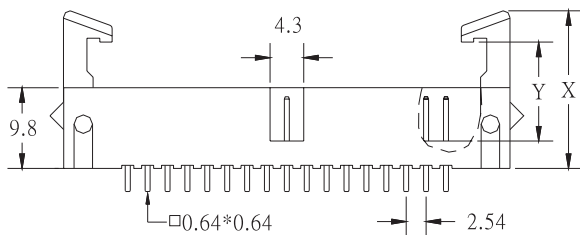
♦ Mating Suggestion : A01, A01a, A03a & A35 series.



C



| POSITION | A     | B     |
|----------|-------|-------|
| 10       | 26.52 | 10.16 |
| 14       | 31.60 | 15.24 |
| 16       | 34.14 | 17.78 |
| 20       | 39.22 | 22.86 |
| 24       | 44.30 | 27.94 |
| 26       | 46.84 | 30.48 |
| 30       | 51.92 | 35.56 |
| 34       | 57.00 | 40.64 |
| 40       | 64.62 | 48.26 |
| 44       | 69.70 | 53.34 |
| 50       | 77.32 | 60.96 |
| 60       | 90.02 | 73.66 |
| 64       | 95.10 | 78.74 |



RECOMMENDED P.C.B LAYOUT

| ACCESSORIES | X    | Y    |
|-------------|------|------|
| LONG LATCH  | 20.3 | 14.6 |
| SHORT LATCH | 16.9 | 10.6 |

### HOW TO ORDER:

C01c -  1 -  2 -  3 -  4 -  5

| 1.NO. OF CONTACT                             | 2.CONTACT MATERIAL             | 3.CONTACT PLATING   | 4.ACCESSORIES                   | 5.INSULATOR COLOR   |
|--|--------------------------------|---|---------------------------------|---------------------|
| 10 14 16 20 24<br>26 30 34 40 44<br>50 60 64 | A: BRASS<br>B: PHOSPHOR BRONZE | T: TIN PLATED<br>S: SELECTIVE<br>G: GOLD FLASH<br>A: 5u" INCH GOLD<br>B: 10u" INCH GOLD<br>C: 15u" INCH GOLD<br>D: 30u" INCH GOLD | A: LONG LATCH<br>B: SHORT LATCH | 1. BLACK<br>2. GREY |