

B22c

ELEVATED FEMALE HEADER WITH POLARIZATION BUMP WITH SQUARE TAIL PROFILE : 11.0mm STRAIGHT PITCH: 2.54mm

SPECIFICATIONS

Material

Insulator : PBT, glass reinforced, rated UL 94V-0

Contact : Brass

Electrical

Current Rating : 1 Amp

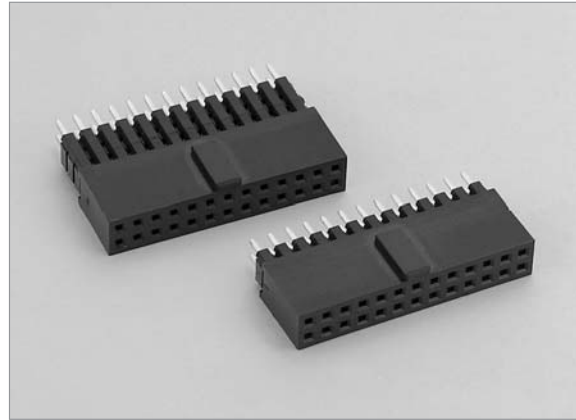
Contact Resistance : 30 mΩ max.

Insulation Resistance : 3000 MΩ min.

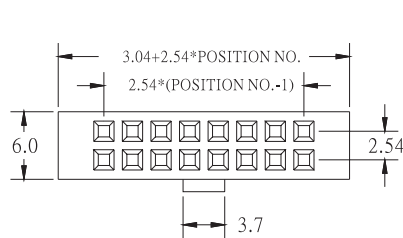
Dielectric Withstanding Voltage : 500V AC for 1minute

Operating Temperature : -40°C to +105°C

♦ Mating Suggestion : C03, C03b, C03c, C03e, C04 & C04a series.

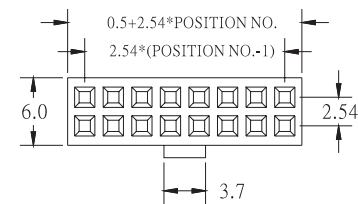


B

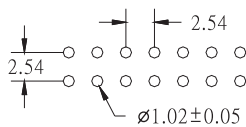
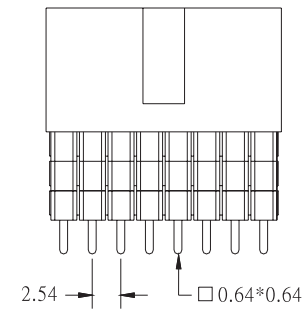
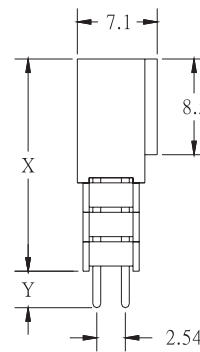
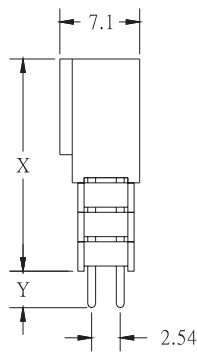
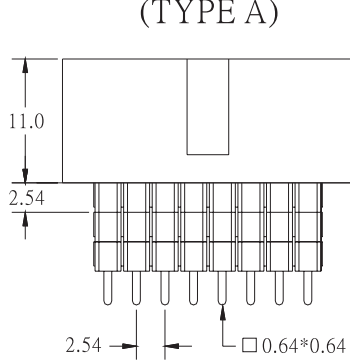


(TYPE A)

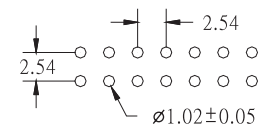
HEIGHT	X	Y
A	13.54	3.5
B	16.08	2.8
C	16.08	6.9
D	18.62	4.4



(TYPE B)



RECOMMENDED P.C.B LAYOUT



RECOMMENDED P.C.B LAYOUT

HOW TO ORDER:

B22c - 1 - 2 - 3 - 4 - 5 - 6

1.NO. OF CONTACT	2.CONTACT MATERIAL	3.CONTACT PLATING	4.INSULATOR TYPE	5.LEAD STYLE	6.INSULATOR COLOR
06 08 10 12 14 16 20 24 26 30 34 40 44 50 60 64	A: BRASS	T: TIN PLATED S: SELECTIVE G: GOLD FLASH A: 5u" INCH GOLD B: 10u" INCH GOLD C: 15u" INCH GOLD D: 30u" INCH GOLD	A: TYPE A B: TYPE B	A: TYPE A B: TYPE B C: TYPE C D: TYPE D	1. BLACK