

B07 FEMALE HEADER

PROFILE : 8.4mm RIGHT ANGLE

PITCH: 2.54mm

SPECIFICATIONS

Material

Insulator : PBT, glass reinforced, rated UL 94V-0

Contact : Phosphor Bronze or Brass

Electrical

Current Rating : 1 Amp

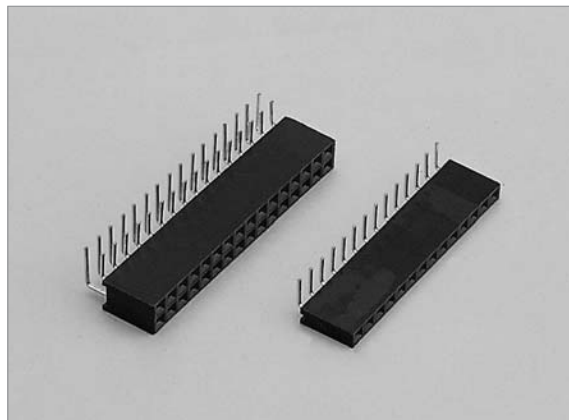
Contact Resistance : 30 mΩ max.

Insulation Resistance : 3000 MΩ min.

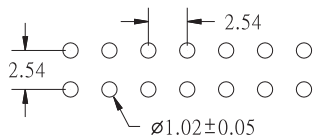
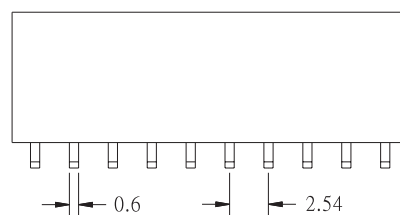
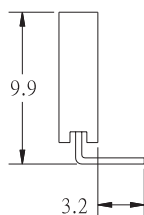
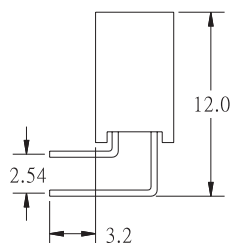
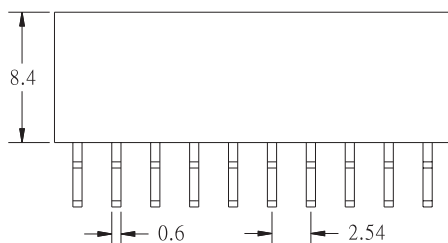
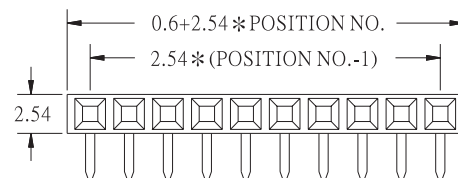
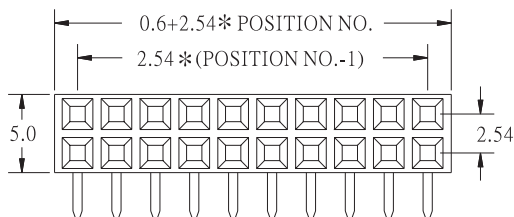
Dielectric Withstanding Voltage : 500V AC for 1minute

Operating Temperature : -40°C to +105°C

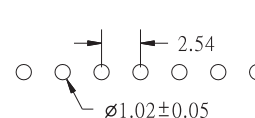
♦ Mating Suggestion : C15, C16, C17 & C18 series.



B



RECOMMENDED P.C.B LAYOUT



RECOMMENDED P.C.B LAYOUT

HOW TO ORDER:

B07 - - - -

| 1.NO. OF CONTACT | 2.CONTACT MATERIAL | 3.CONTACT PLATING | 4.INSULATOR COLOR |
|--|--------------------------------|---|-------------------|
| SINGLE ROW 1*2 - 1*43 DUAL ROW 2*2 - 2*43 | A: BRASS B: PHOSPHOR BRONZE | T: TIN PLATED S: SELECTIVE G: GOLD FLASH A: 5u" INCH GOLD B: 10u" INCH GOLD C: 15u" INCH GOLD D: 30u" INCH GOLD | 1. BLACK |