

# A04a

## IDC SOCKET SINGLE ROW (NARROW TYPE)

PITCH: 2.54mm

### SPECIFICATIONS

#### Material

Insulator : PBT, glass reinforced, rated UL 94V-0

Contact : Phosphor Bronze

#### Electrical

Current Rating : 2 Amp

Contact Resistance : 30 mΩ max.

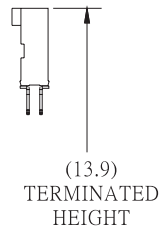
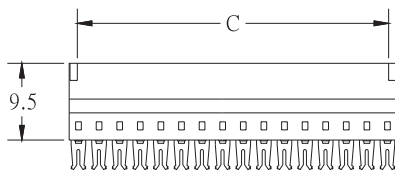
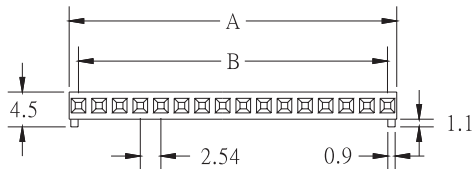
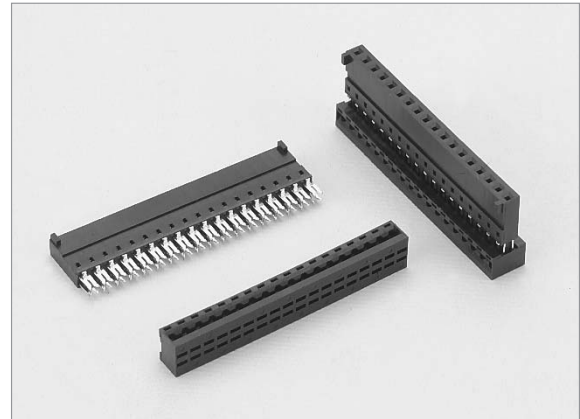
Insulation Resistance : 3000 MΩ min.

Dielectric Withstanding Voltage : 500V AC for 1minute

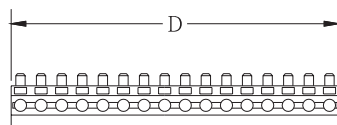
Operating Temperature : -40°C to +105°C

◆ Terminated with L04a 2.54mm pitch flat ribbon cable.

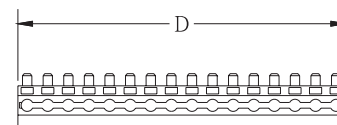
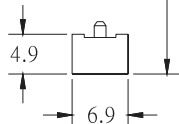
◆ Mating Suggestion : C38 & C39 series.



POSITION	A	B	C	D
2	4.72	2.54	2.52	5.02
3	7.26	5.08	5.06	7.56
4	9.80	7.62	7.60	10.10
5	12.34	10.16	10.14	12.64
6	14.88	12.70	12.68	15.18
7	17.42	15.24	15.22	17.72
8	19.96	17.78	17.76	20.26
9	22.50	20.32	20.30	22.80
10	25.04	22.86	22.84	25.34
11	27.58	25.40	25.38	27.88
12	30.12	27.94	27.92	30.42
13	32.66	30.48	30.46	32.96
14	35.20	33.02	33.00	35.50
15	37.74	35.56	35.54	38.04
16	40.28	38.10	38.08	40.58
17	42.82	40.64	40.62	43.12
18	45.36	43.18	43.16	45.66
19	47.90	45.72	45.70	48.20
20	50.44	48.26	48.24	50.74
21	52.98	50.80	50.78	53.28
22	55.52	53.34	53.32	55.82
23	58.06	55.88	55.86	58.36
24	60.60	58.42	58.40	60.90



(TYPE A)



(TYPE B)

### HOW TO ORDER:

A04a -  1 -  2 -  3 -  4 -  5

1.NO. OF CONTACT	2.CONTACT MATERIAL	3.CONTACT PLATING	4.COVER TYPE	5.INSULATOR COLOR
02 03 04 05 06 07 08 09 10 11 12 13 14 15 16 17 18 19 20 21 22 23 24	B: PHOSPHOR BRONZE	T: TIN PLATED S: SELECTIVE G: GOLD FLASH A: 5u" INCH GOLD B: 10u" INCH GOLD C: 15u" INCH GOLD D: 30u" INCH GOLD	A: TYPE A B: TYPE B	1. BLACK